

# Murano Glass on Porcelain



Mother of Pearl onto Porcelain  
Fire at 017



I use Maritza de Gongora premixed  
Fine Thick Texture.  
Place a generous amount onto the Porcelain  
with a palate knife in area you would like glass  
to be. It goes on rough, but smooths out as it  
dries.



Use tweezers to place glass close together.  
Maximum adhesion is achieved by using  
small pieces and placing flattest side down  
into texture. When fired the cut glass will  
become rounded out. (Become Smooth)



Let dry till texture hardens slightly  
before firing.





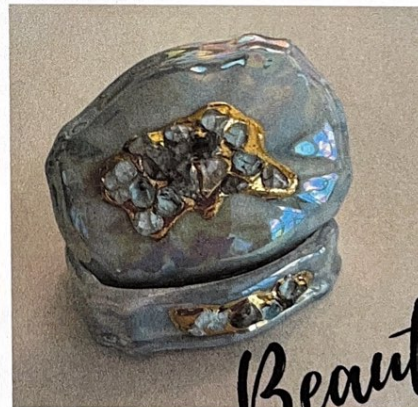
For best rounding of glass, fire at 016 in the middle or higher in kiln.  
(Hottest part of Kiln.)

**DO NOT VENT LID**

Let Kiln cool completely before opening.  
Porcelain and Glass Heat and Cool at different rates.  
(Glass may fracture because of this)



With a small brush place White Gold or Liquid Bright Gold onto texture areas. Let Dry and Fire at 018.



*Beautiful*

**TIPS:**

Use small pieces of glass to reduce fracturing after firing. Large pieces tend to Fracture and break off the piece.

To break large glass pieces: Place in a cloth and hit them with a hammer. Do so on the cement or other hard surface.

If Glass breaks off after firing:

You can glue back with E6000, than use a Metallic Permanent marker to repair Gold work.  
(Pilot Brand Gold or Silver Permanent Marker works great).

or

Place more texture on the area, add more glass, let dry and fire 016 in middle of kiln or higher.  
Touch-up Gold Work with Metallic Permanent marker.